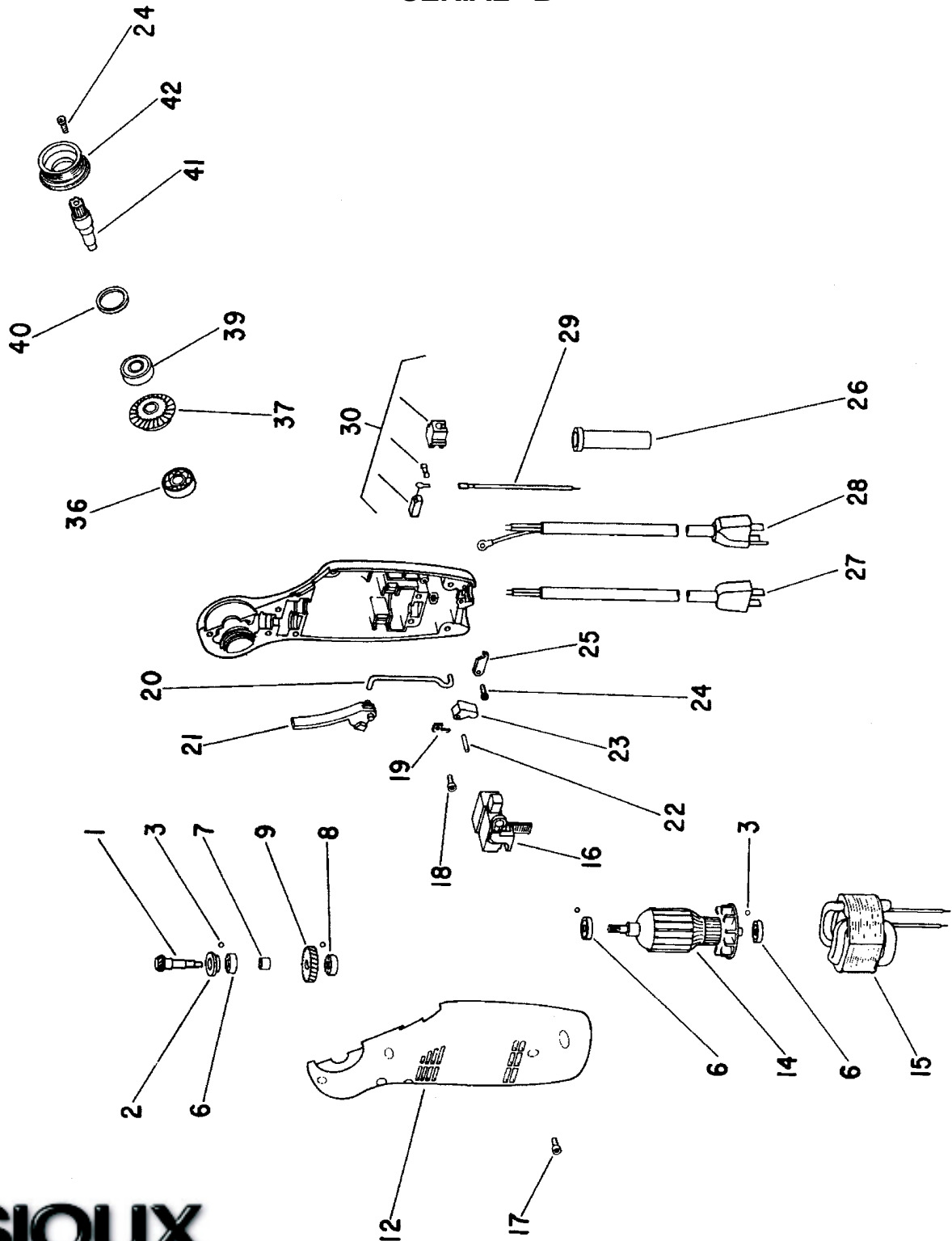




PARTS LIST FOR 8000 SERIES SCREWDRIVERS SERIAL "B"



**SIoux
TOOLS INC.**

2901 FLOYD BOULEVARD ■ PO BOX 507 ■ SIOUX CITY, IOWA 51102-0507 USA ■

Printed In U.S.A.

PARTS LIST FOR

8000 SERIES SCREWDRIVERS

SERIAL "B"

Fig. No.	Part No.	Description
1.	19741	Assy—Gear & Pinion 750 RPM (Includes fig. #37)
	19742	Assy—Gear & Pinion 1300 RPM (Includes fig. #37)
	19743	Assy—Gear & Pinion 2500 RPM (Includes fig. #37)
2.	54916	Spacer
3.	04293	Ball—Rubber (4)*
6.	65470	Bearing—Ball (3)*
7.	64107	Spacer (1)*
8.	65476	Bearing—Ball
9.	19273	Gear (1300 & 2500 RPM)
	19276	Gear (750RPM)
12.	63540	Assy—Housing (includes (4) #3)
14.	28684	Armature & Bearings (115V, 1300 & 2500 RPM)
	28684J	Armature & Bearings (230V, 1300 & 2500 RPM)
	28676	Armature & Bearings (115V, 750 RPM)
	28676J	Armature & Bearings (230V, 750 RPM)
15.	28570	Field 115V
	28570J	Field 230V
16.	18218	Switch 115V
	18220	Switch 230V
17.	56201	Screw—Soc. Hd. (M4 x .7 x 10)(8)*
18.	56202	Screw—Soc. Hd. (M4 x .7 x 6) (Grounded Tools Only)
19.	18622	Strip—Grounding (Grounded Tools Only)
20.	54716	Rod—Switch
21.	14166	Lever—Trigger (Red)
	14186	Lever—Trigger (Yellow)
22.	40079	Pin
23.	14167	Bell Crank (Red)
	14185	Bell Crank (Yellow)
24.	06105	Screw—Pan Head (6)*
25.	35587	Clamp—Strain Relief
26.	04291	Cord Protector
27.	18549	Cord 115V
		Cord 230V
28.	18460	Cord 115V (Grounded Only)
		Cord 230V (Grounded Only)
29.	28113	Terminal Wire (2)*
30.	63233	Brush & Holder (Pair)
36.	10942	Bearing—Ball
37.		See Fig. 1
39.	10221	Bearing—Ball
40.	63073	Assy—Washers

Fig. No.	Part No.	Description
41.	64095	Output Shaft
42.	14187	Clutch Case Adapter
43.	04288	"O"—Ring

Part No.	Description
20936	Decal—Rev. Lever (Set)
20460	Plate—Name (8020)
20461	Plate—Name (8020A)
20462	Plate—Name (8022)
20463	Plate—Name (8024)
20464	Plate—Name (8025)
20465	Plate—Name (8025A)
20466	Plate—Name (8027)
20467	Plate—Name (8029)
20487	Plate—Name (8020G)
20488	Plate—Name (8020AG)
20489	Plate—Name (8022G)
20490	Plate—Name (8024G)
20491	Plate—Name (8025G)
20492	Plate—Name (8025AG)
20493	Plate—Name (8027G)
20494	Plate—Name (8029G)
20499	Plate—Name (8020J)
20500	Plate—Name (8020AJ)
20501	Plate—Name (8022J)
20502	Plate—Name (8024J)
20503	Plate—Name (8025J)
20504	Plate—Name (8025AJ)
20505	Plate—Name (8027J)
20506	Plate—Name (8029J)
20511	Plate—Name (8029GJ)
20514	Plate—Name (8020GJ)
20515	Plate—Name (8020AGJ)
20516	Plate—Name (8022GJ)
20517	Plate—Name (8024GJ)
20518	Plate—Name (8025GJ)
20519	Plate—Name (8025AGJ)
20520	Plate—Name (8027GJ)

FURNISH CATALOG SERIAL & MODEL NUMBER WHEN ORDERING PARTS

*Order Quantity Needed

POSITIVE CLUTCH

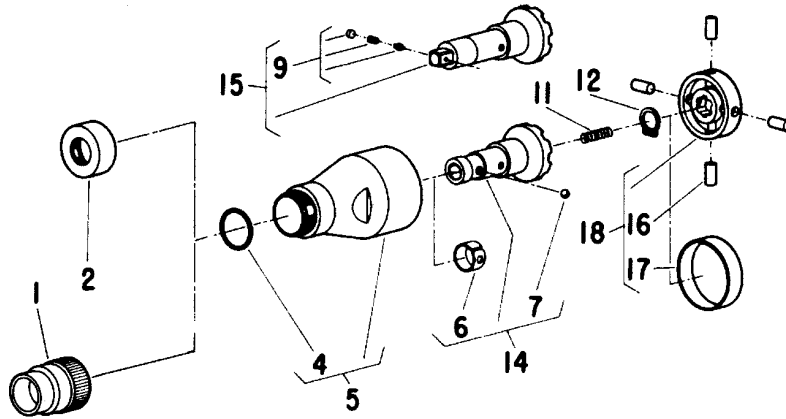


Fig. No.	Part No.	Description
1.	44520	Retainer—Finder (Magnet Screwdriver)
2.	54076	Protector—Thread
4.	14281	Ring—"O"
5.	63085	Ass'y—Clutch & "O"-Ring
6.	25854	Ring—Ball Retainer
7.	10902	Ball—Retainer
9.	33465	Ass'y—Socket Retainer (3/8" Square Nutrunner)
	33827	Ass'y—Socket Retainer (1/4" Square Nutrunner)
11.	21379	Spring
12.	21500	Ring—Retainer
14.	33631	Socket—Drive (Screwdriver)
15.	53152	Ass'y—Drive Spindle (3/8" Square Nutrunner)
	53154	Ass'y—Drive Spindle (1/4" Square Nutrunner)
16.	34856	Roller (4)
17.	34854	Ring—Roller Retainer
18.	33630	Ass'y—Roller Cage

ADJUSTABLE CLUTCH

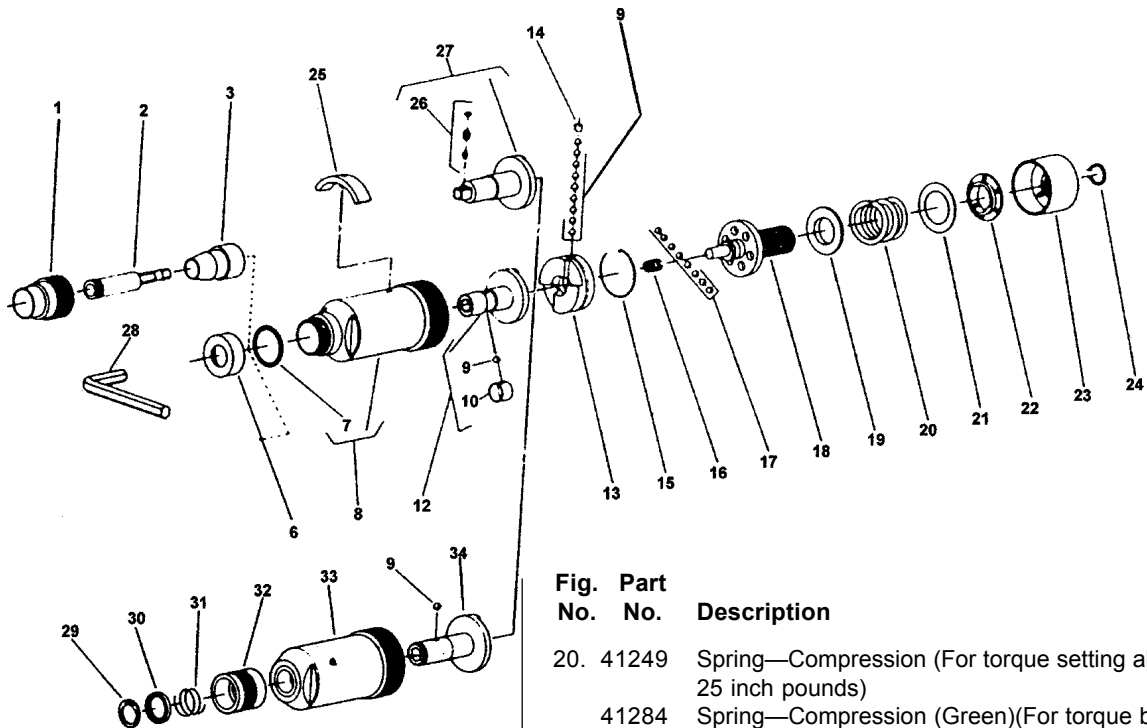


Fig. No.	Part No.	Description
1.	44520	Retainer—Finder
2.	2525	Bit Holder—Magnetic (Magnetic Only)
3.	2497	Bushing (Magnetic Only)
6.	54076	Protector—Thread
7.	14281	Ring—"O"
8.	63084	Ass'y—Clutch Case
9.	10902	Ball—Steel (10)*
10.	25854	Clip—Retainer
12.	53076	Ass'y—Bit Holder
13.	54071	Jaw—Clutch
14.	54074	Retainer—Ball
15.	21762	Ring—Retaining (Includes Wire & Spiral)
16.	41250	Spring
17.	10291	Ball—Steel (8)
18.	22669	Spindle—Clutch
19.	54072	Guide—Spring

Fig. No.	Part No.	Description
20.	41249	Spring—Compression (For torque setting above 25 inch pounds)
	41284	Spring—Compression (Green)(For torque below 25 inch pounds)
21.	35273	Washer
22.	54073	Washer—Index
23.	53095	Nut—Adjusting
24.	21774	Ring—Retaining
25.	53099	Wrench—Adjusting
26.	33827	Ass'y—Socket Retainer (1/4" Square Nutrunner)
	33465	Ass'y—Socket Retainer (3/8" Square Nutrunner)
27.	53082	Spindle—Drive (1/4" Square Nutrunner)
	53083	Spindle—Drive (3/8" Square Nutrunner)
28.	30208	Wrench—Allen
29.	21501	Ring—Retaining
30.	44660	Ring—Guide
31.	21406	Spring
32.	54468	Retainer—Ball
33.	54470	Case—Clutch
34.	22677	Holder—Bit



POSITIVE ANGLE JAW CLUTCH TYPE "A"

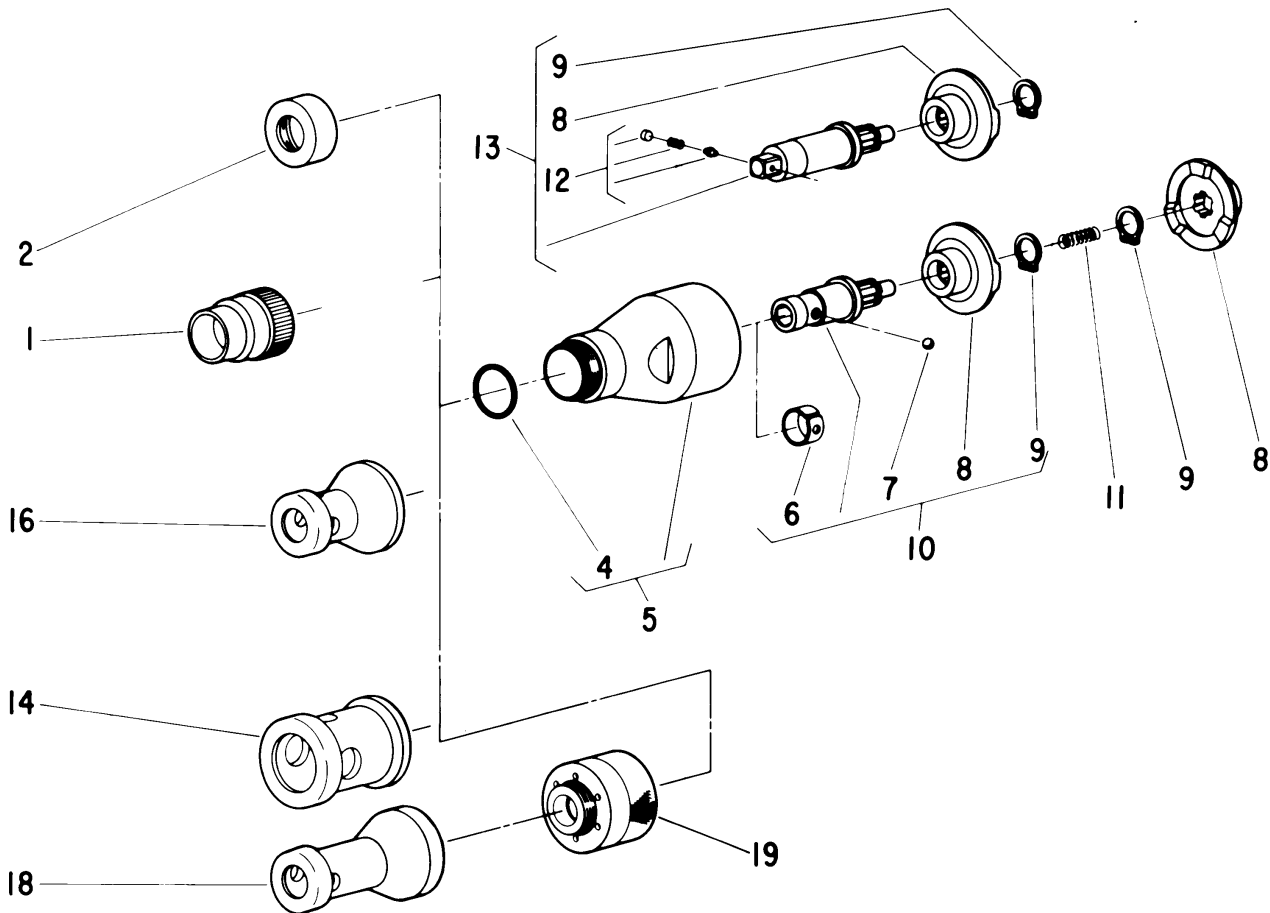


Fig. Part

No.	No.	Description
1.	44520	Retainer—Finder (Magnet Screwdriver)
2.	54862	Adapter "DF Only"
	54076	Protector—Thread
4.	14281	Ring—"O"
5.	63085	Ass'y—Clutch Case & "O" Ring
6.	25854	Ring—Ball Retainer (Screwdriver)
7.	10902	Ball—Retainer (Screwdriver)
8.	44662	Jaw—Clutch (2)
9.	21500	Ring—Retaining (2)
10.	43452	Ass'y—Drive Socket (Screwdriver)
11.	21379	Spring
12.	33465	Ass'y—Socket Retainer (3/8" Square Nutrunner)
	33827	Ass'y—Socket Retainer (1/4" Square Nutrunner)
13.	53156	Ass'y—Drive Spindle (3/8" Square Nutrunner)
	53155	Ass'y—Drive Spindle (1/4" Square Nutrunner)
(Includes one each of Fig. 8 & 9)		

Fig. Part

No.	No.	Description
14.	54104	Nose Piece—Fastener Locator (Std.)
	14110	Cap—End
16.	63121	Extended Locator 12" (X Only)
	63122	Bit Holder 12" (X Only)(Not Shown)
	54103	Nose Piece—Round Locator
	14109	Cap—End
18.	54241	Nose Piece—Long Round Locator
	14109	Cap—End
19.	53511	Ass'y—Depth Locator Base (Use with Figs. 14, 16 or 17)
	53512	Ass'y—Depth Locator Base (Use with Fig. 18)

SIoux TOOLS INC.

2901 FLOYD BOULEVARD ■ PO BOX 507 ■ SIOUX CITY, IOWA 51102-0507 USA ■

Printed In U.S.A.